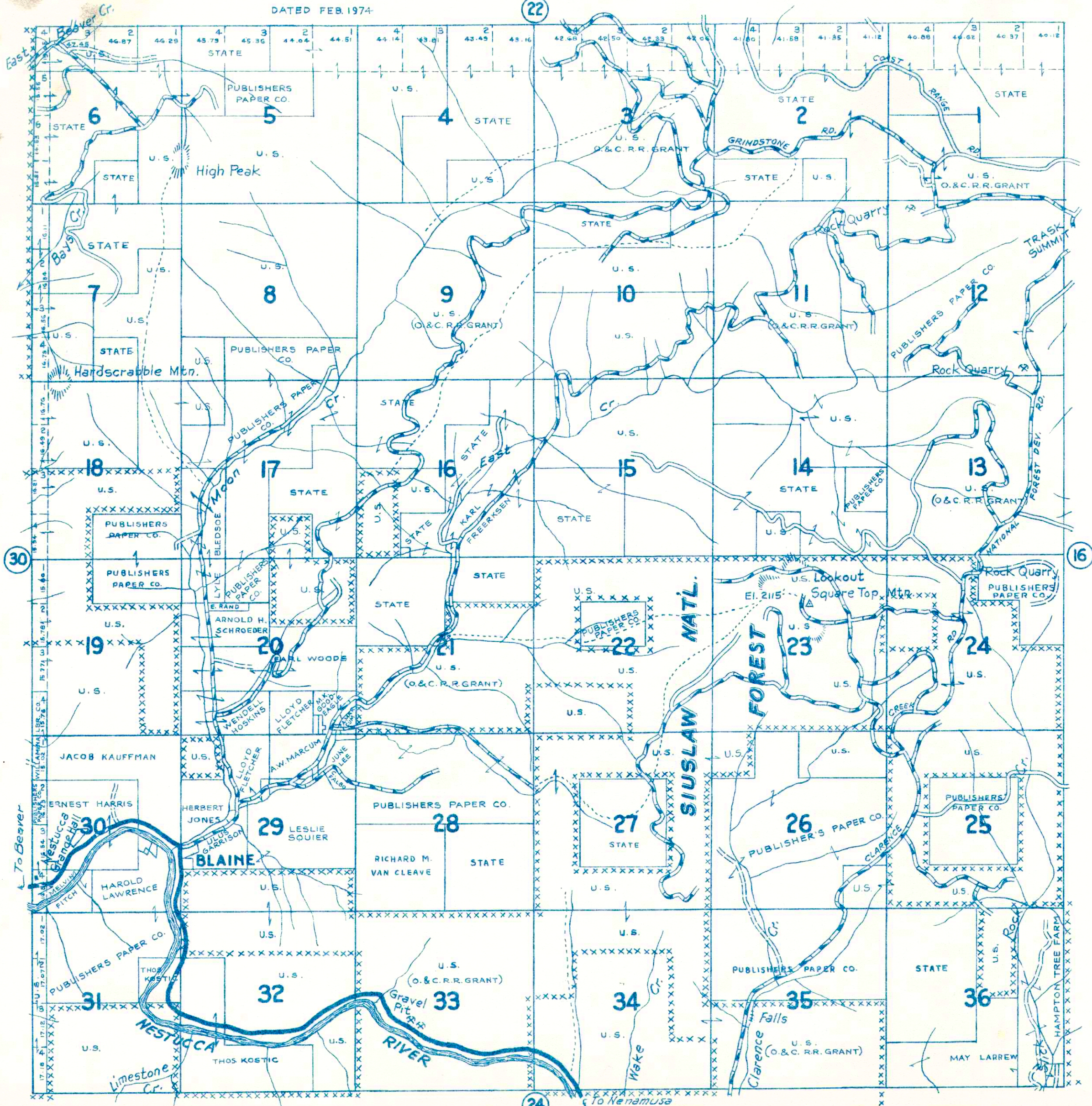


TOWNSHIP 3 S., RANGE 8 W.W.M. TILLAMOOK COUNTY ORE.

DATED FEB. 1974

(22)



Reproduction in whole
or part for personal use or
resale is prohibited by law.

LEGEND

- STATE HWY. (6) U.S. HWY. (101)
- PAVED HIGHWAYS
- IMPROVED DIRT ROADS
- DIRT ROADS
- INFERIOR ROADS
- RAILROADS
- TRAILS
- INTERMITTENT CREEKS
- NAT'L FOREST BDY. (XXXXX)
- ELEC. PWR. TRANS. LINES (---o---